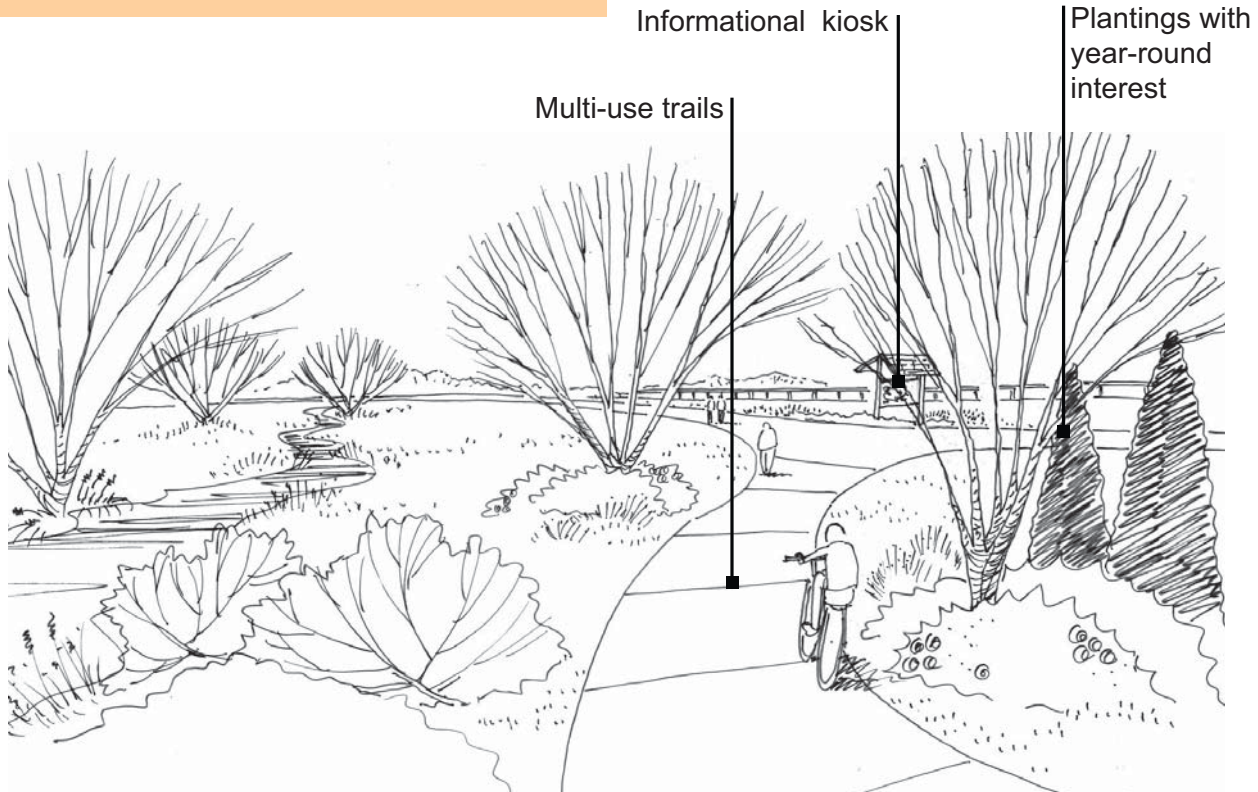


Open Space/Greenway Corridor

Corridors that have a focus on the natural environment and are defined by their lack of built features. They may include trails, waterways, drainage components, or wildlife value.



Design Principles

- Design paths and trails to provide a comfortable width for several people walking, riding bicycles, or horses.
- Use primarily native vegetation in open space/natural areas, with maintained landscapes in adjacent park areas.
- Incorporate landscaping to enhance the visual aspects of corridors.
- Design trails and open space corridors to take advantage of distant views.
- Increase pedestrian and bicycle connections between residential areas, businesses, and other key destinations.
- Improve visibility of access points through trailhead signage and information kiosks that are attractive and integrated into the setting.

WHY ARE THESE PRINCIPLES IMPORTANT?

- Greenway facilities that are designed to accommodate multiple users will attract more people.
- In our dry climate, we should plan our landscapes carefully into high and low water use areas, as appropriate for levels of activity and usage.
- Open space and greenway corridors can serve an important role in linking our neighborhoods with other areas of the City.